



The Align Series from L.R. Baggs got bigger!

See Page 5



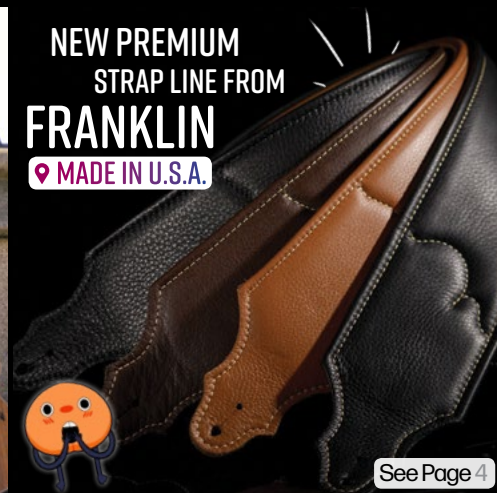
heaps of new models from
Tanglewood

See Page 3 & 8

PLUS!

HOT! DEAL

on SUNDANCE and UNION



NEW PREMIUM STRAP LINE FROM
FRANKLIN

MADE IN U.S.A.

See Page 4



new amp range
PLUS accessories

Aroma

See Page 2



**THE NEW
FINANCIAL
YEAR
SALE!**



new ukes and
safari from
Luna

See Page 6



INTRODUCING
CODA BAGS

NEW PREMIUM
BIG BAGS FROM

OGB

See Page 6



HUNDREDS OF NEW PRODUCTS!
PLUS! **HOT! HOT! HOT!** DEALS!



New! **Dcm Deluxe**

See Page 2



New Classical
Range from
Kremona

See Page 7



HAVE YOU TRIED
THE REVOLUTIONARY
NEW **G7TH**
PERFORMANCE 3?

See Page 7



OVER
100

NEW PRODUCTS
ADDED SO FAR
THIS YEAR!

TURN THE PAGE TO GET STARTED!

deluxe

NEW CASE LINE

Lightweight foam case with leatherette cover, moulded foam interior with black plush velvet. Each case has an outside pocket and two shoulder straps.



BLACK

Dreadnought
DCM DX D

Classical
DCM DX C

\$129.95
RRP



BLACK / ORANGE

Dreadnought
DCM DX DO

Classical
DCM DX CO

\$129.95
RRP



BLACK / PURPLE

Dreadnought
DCM DX DP

Classical
DCM DX CP

\$129.95
RRP

NEW PRODUCTS FROM AROMA®

AG10 OR

\$139
RRP



AG10 PORTABLE ELECTRIC AMPS

10 Watt
Gain, Vol, Treble & Bass Control
Distortion / Clean Sound
Aux in
Battery Powered or DC 12V
Available in Black or Orange



AG10 BK

\$139
RRP

\$29.95
RRP

AH-86 GUITAR HANGER

Metal Alloy Lockable Hanger

NEW!



RUM9



RUM10



RUM11

\$30.95
RRP

New ULTRAMAG strings for electric guitar consist of 52% nickel & 48% iron, accentuating those mids & lows. Low co-efficient expansion will help maintain your tuning, no matter the environment!



\$249.95
RRP

ARG05

ARG05 WIRELESS TRANSMISSION SYSTEM

5.8G Wireless Transmission
Distance of over 35 metres
Delay time less than 5.6ms
120° Rotatable Head
Used with any 6.5mm input
4 Channel Options
Rechargeable Li Battery
Up to 4 Hours Continuous Use

ART01 WIRELESS TUNER

Wireless
Rechargeable
Universal tuning
Metronome
Tap function



\$79.95
RRP # ART01

SUPER DOOPER COLOUR TUNER DEAL!



\$24.95
each



\$999

TWX 45NSE



TWX 15NSCE



\$899

TWX 45AVE



TWX 47E



\$999

\$1,199

TWX45NSE: Super folk cutaway, solid Cedar top, vintage amber satin finish. **TWX15NSCE:** Dreadnought cutaway, solid Spruce top, natural satin finish. **TWX45AVE:** Super folk cutaway, solid Cedar top, antique violin gloss finish. **TWX47E:** Super folk cutaway, solid Mahogany top, natural gloss finish.

Tanglewood

WE ARE MUSICIANS FIRST.

5 YEAR
WARRANTY

SUNDANCE PERFORMANCE PRO

All solid tops, solid Mahogany back & sides, Fishman Presys+ preamps, Elixir strings, Grover machine heads, bone nut & saddles and all guitars include a premium foam case!



UNION SERIES

Solid African Mahogany tops, Mahogany back & sides, Maple binding with a natural satin finish. Available in Dreadnought or folk sizes and with a preamp option.



\$299

SOLID MAHOGANY TOPS!

\$399



NEW! BANJO PICKUP

\$139.95
RRP

KNABP1

Encased in a lightweight tonewood, the BP-1 installs easily on the side of the banjo's bridge. This unique way of capturing sound delivers a natural amplified tone.

Franklin

The Soft Strap

See Page 26 of our new Catalogue! **MADE IN U.S.A.**

Available in a variety of colour options with a choice of leather or embossed suede ends.

2" Polyweb Straps

Available in a variety of colour options all with black leather ends.

*Not all colours available

\$14.95 RRP

\$79.95 RRP

SUEDE FROM **\$49.95 RRP**

3" Saddle Blanket Straps

Two options available, both with pebbled leather ends. Durable fabric acts as a shock absorber for heavier instruments.

2.5" Roadhouse Leather Strap

\$139.95 RRP

Distressed double ply supple glove leather & soft garment suede.

Original Black Leather Straps

FROM **\$84.95 RRP**

Double ply construction of supple glove leather with soft garment suede, outlined with contrast stitching. Available in 2.5" or 3".

THE ECONOMY RANGE

High quality affordable straps available in Suede, Glove Leather, Polyweb, & Cotton.

See Page 26 of our new Catalogue!

Purist Straps

Available in both suede or glove leather in either 2.5" or 3". Multiple colours also available. All straps have a soft buck backing for comfort.

2.5" Embossed Suede Straps

Embossed suede with plush pebbled glove leather ends offer a beautiful blend of textures.

\$89.95 RRP

*Not all colours available

THE ORIGINAL RANGE

The original straps that got us started! A wide range of Suede & Glove Leather straps to suit all players.

See Page 26 of our new Catalogue!

2.5" Original Suede Straps

Made with soft garment suedes, double ply end tabs and outlined with contrasting stitching.

\$69.95 RRP

2" Cotton Straps

FROM **\$24.95 RRP**

2" Aviator Seat Belt Straps

\$25.95 RRP

Material used by aerospace manufacturers! All with black pebbled leather ends.

*Not all colours available

THE PREMIUM RANGE

For the ultimate in comfort & look. Featuring richly oiled leathers & decorative elements.

See Page 26 of our new Catalogue!

3" Jackson Hole Aged Leather Straps

Distinct Jackson Hole aged leather lined with lush garment leather. Two colours available.

\$159.95 RRP

3" Tooled Glove Leather Straps

*Plain black not available

Double ply glove leather with tooled floral leather for an old world appeal.

\$99.95 RRP

Sculpted Ball Glove Leather Straps

Hand sculpted, deep oiled leather straps represent the highest of leather artistry! Featuring richly contrasting pebbled inlays with concho. Available in multiple styles, in 2.5" & 3".

\$189.95 RRP

3" STRAP

\$179.95 RRP

2.5" STRAP

Original Natural Leather Straps

Our original leather straps; double ply construction of supple glove leather with soft garment suede, outlined with contrasting gold stitch for a refined look. Available in 2.5" or 3" sizes.

FROM **\$84.95 RRP**

Banjo Leather Straps

Double ply construction of supple glove leather with soft garment suede backing & ends.

\$89.95 RRP

Padded Leather Straps

For total comfort on stage, our padded straps are for you! Available in plain glove leather & in the Southwest hitch weave with concho.

FROM **\$129.95 RRP**

*Not all colours available

Bass Snake Skin Straps

3.5" deeply oiled glove leather straps with faux snake skin & large chrome rings.

\$199.95 RRP

2.5" Reversible Glove Leather Strap

3 layers of supple glove leather, double stitch and can be used as a black or red strap.

\$139.95 RRP

C.R. Bayo

NEW ALIGN PEDALS!

ALIGN CHORUS

RRP \$395

- Blend chorus signal with unaffected signal
- Blend between 2 chorus voicings
- Sweeps through wide range of warmth, radiance, & everywhere in between
- Volume level control
- Adds fullness behind guitar without signal degradation
- True bypass
- 9V battery or DC Power

ALIGN DELAY

RRP \$395

- Blend delay signal with unaffected signal
- Control total number of repeats
- Set time between original and repeated signal
- Division sets delay to dotted 8th note of current tempo
- Tap tempo
- Tap tempo input for external tap tempo footswitch
- Sweeps through wide range of warmth, radiance, & everywhere in between
- 9V battery or DC Power



NEW PREMIUM CODA BAG LINE

Custom designed, multi-cell layered, premium padded, water resistant exterior material. Crushed velveteen inner lining. Ergonomically styled to accommodate instruments securely with maximum protection.



Oversized padded backpack straps with metal on metal attachments for security.



Large music book pocket on front of bag, second discreet pocket on rear of bag. Unique custom styled rubber zip pull tags for smooth action.

- Classical Coda # OGB C 2
- Electric Coda # OGB C 3
- Dreadnought Coda # OGB C 5

BAMBOO UKE RANGE

Featuring all Bamboo woods, Walnut fingerboard & bridge, Pearl moon phase inlays, bamboo soundhole etch design, natural satin finish & includes padded gig bag.

Available in soprano, concert & tenor.



LUUKE HTT EXM RRP \$279
LUUKE HTC EXM RRP \$459
LUUKE HTS EXM RRP \$429

ART VINTAGE RANGE

Featuring Spruce tops, Mahogany back & sides, Walnut fingerboard & bridge, Pearl moon phase inlays, single ply cream binding, distressed vintage brownburst finish & includes padded gig bag.

Available in concert uke & safari traveller guitar.



LUUKE ARTVC RRP \$279
LUSAF ARTVINTAGE RRP \$419



LUNA RRP \$339
LUUKE BAMBOOS RRP \$299
LUUKE BAMBOOC RRP \$299
LUUKE BAMBOOT RRP \$299

HIGH TIDE EXOTIC RANGE

Featuring all exotic Mahogany woods, Walnut fingerboard & bridge, Abalone high tide inlays, multiply Maple & Walnut binding, natural satin finish & includes padded gig bag.

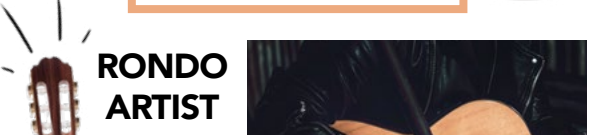
Available in soprano, concert & tenor.



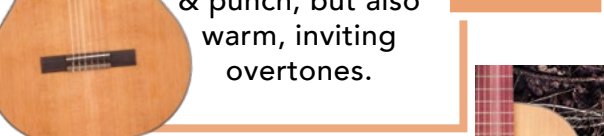
LUUKE HTT EXM RRP \$429
LUUKE HTC EXM RRP \$429
LUUKE HTS EXM RRP \$429



FIESTA SOLOIST RRP \$1,095
Traditional solid cedar/rosewood pairing delivers great string definition, sonorous warmth & amazing projection.



RONDO ARTIST RRP \$1,795
Crafted entirely of all solid, Bulgarian walnut & spruce, offers brightness & punch, but also warm, inviting overtones.



ROSA BELLA FLAMENCO RRP \$1,595
Light, firm Bulgarian ash is the secret to Bella's precision & punch. Dynamic & earthy, with all solid woods.



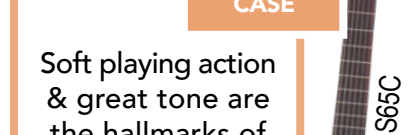
ROSA BELLA RRP \$1,595
ROSA BELLA
ROSA BELLA
ROSA BELLA

SOLOIST RONDO

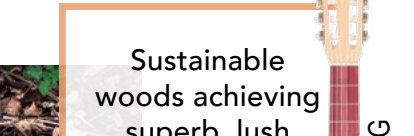
Beautiful walnut back & sides feature a variety of patterns, streaks & flames. Bright & balanced tone with a solid spruce top.



MADE IN EUROPE INCLUDES CASE
R65S RRP \$995



SOFA SOLOIST RRP \$895
Soft playing action & great tone are the hallmarks of this handcrafted guitar.



SOFA GREEN GLOBE RRP \$595
Sustainable woods achieving superb, lush tonal resonance & a striking appearance.



ROSA BELLA RRP \$1,595
ROSA BELLA
ROSA BELLA
ROSA BELLA

MEET THE NEW PERFORMANCE 3 CAPO WITH ADAPTIVE RADIUS TECHNOLOGY

What if there was a capo that would actively adapt its string pad to match the curvature over the strings in EVERY position, on ANY guitar neck?



THE FUTURE OF CAPOS
FREE LIFETIME WARRANTY

SILVER RRP \$94.95
G7P3

BLACK RRP \$94.95
G7P3 BK

BLACK CELTIC RRP \$124.95
G7P3 CB

18 KT GOLD RRP \$119.95
G7P3 G

18 KT GOLD RRP \$119.95
G7P3 G

18 KT GOLD RRP \$119.95
G7P3 G

18 KT GOLD RRP \$119.95
G7P3 G

18 KT GOLD RRP \$119.95
G7P3 G

JAVA UKE RANGE

Our new Java Uke Range all feature solid Koa tops, Koa back & sides, cutaway electrics and are strung with Aquila Nylgut strings.

The UJ2 & UJ5 both feature Flame Maple binding with a natural open pore satin finish.

The UJ6 & UJ7 both feature Mahogany binding with a vintage burst gloss finish.

Available in concert or tenor sizes

5 YEAR
WARRANTY

NEW FROM
Canglenwood[®]



TUJ2CE
Concert

\$499 RRP



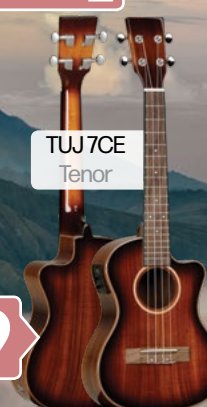
TUJ5CE
Tenor

RRP **\$549**



TUJ6CE
Concert

\$499 RRP



TUJ7CE
Tenor

RRP **\$549**

5 YEAR
WARRANTY

MAHOGANY MANDO

All Mahogany teardrop mandolin. Featuring F-Holes, fully adjustable bridge, chrome tailpiece and complete with a natural gloss finish.

TWMT MH

RRP **\$399**



WINTERLEAF TRAVELLERS

Traveller acoustic / electrics featuring Mahogany back & sides, with preamp & includes deluxe padded gig bag!

5 YEAR
WARRANTY

\$449 RRP

TW2 TXE

Featuring Mahogany top with gloss finish!

RRP **\$399**

TW2 TSE

Featuring Spruce top with satin finish!



WINTERLEAF CLASSICAL RANGE

All guitars are full size classicals with Spruce tops, Mahogany back & sides with Savarez strings.

TWCE2 features a TW-EX4 preamp & natural satin finish.

TWCE3 features a B-Band M450-T preamp & natural gloss finish.

TWCE4 features a solid top, Fishman Presys preamp & natural gloss finish.

TWCE 2

\$449 RRP

TWCE 3

\$549 RRP

TWCE 4

RRP **\$799**

5 YEAR
WARRANTY

CLASSICAL GUITAR STRINGS

TWGSC

HOT!
IDEAL

\$9.95 each



green brothers
P: 07 4927 3088

72-78 William St,
Rockhampton, QLD

E: admin@greenbrothers.com.au

ORDER NOW!

P: 07 4927 3088 | admin@greenbrothers.com.au

green brothers